



# Orange Belt Trail Study

Trinity to Trilby



The Orange Belt Trail (OBT) is a proposed 37-mile, multi-use trail that will span Pasco County, from Trinity to Trilby. It will provide key connections to the Coast-to-Coast Trail, Starkey Trail, Suncoast Trail, and Withlacoochee Trail.

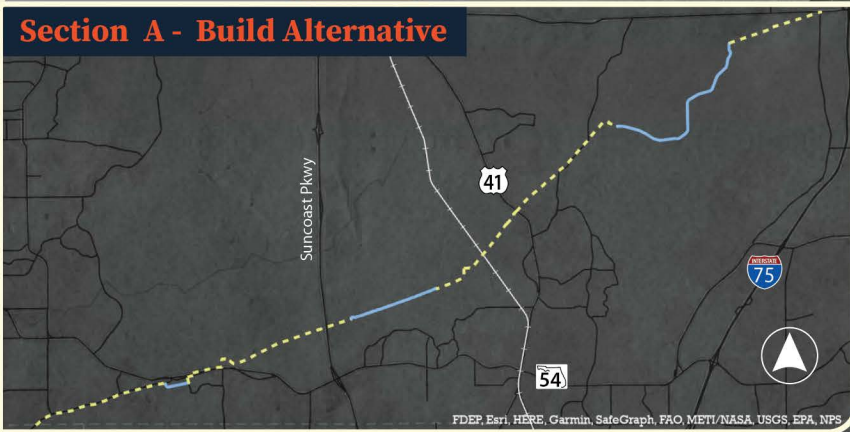
The OBT is envisioned to be off the roadway, where feasible, and follow natural features to the greatest extent possible. It will be open to pedestrian and bicycle traffic and may permit other mobility options in certain areas.

## We Want Your Input!

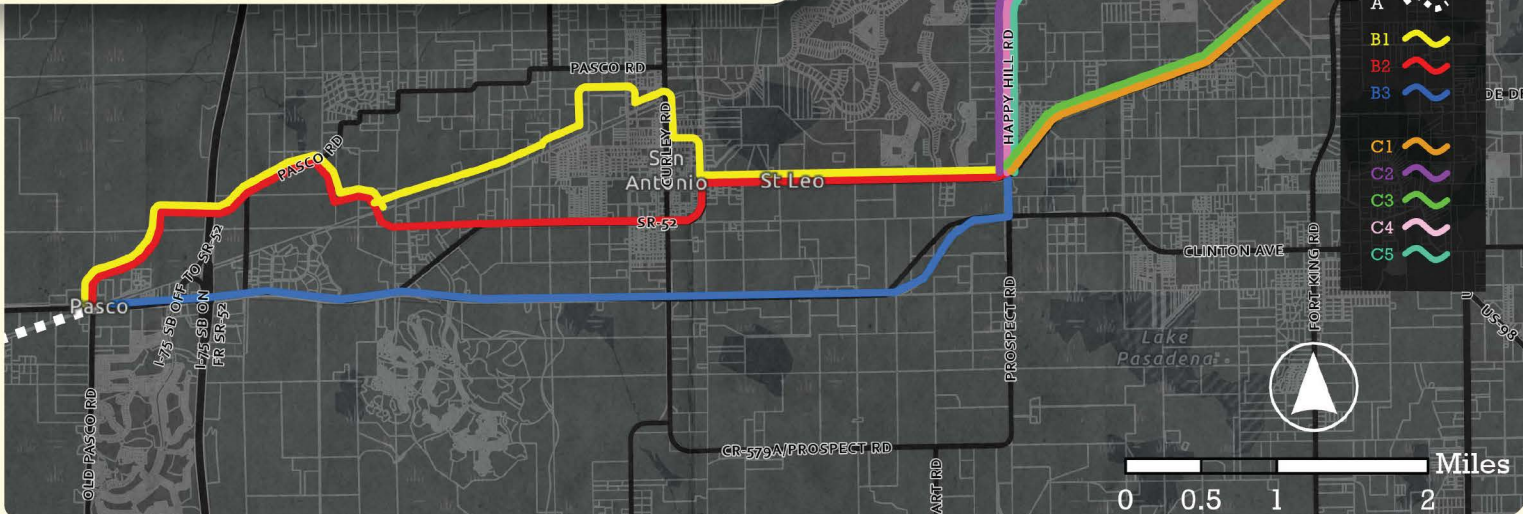
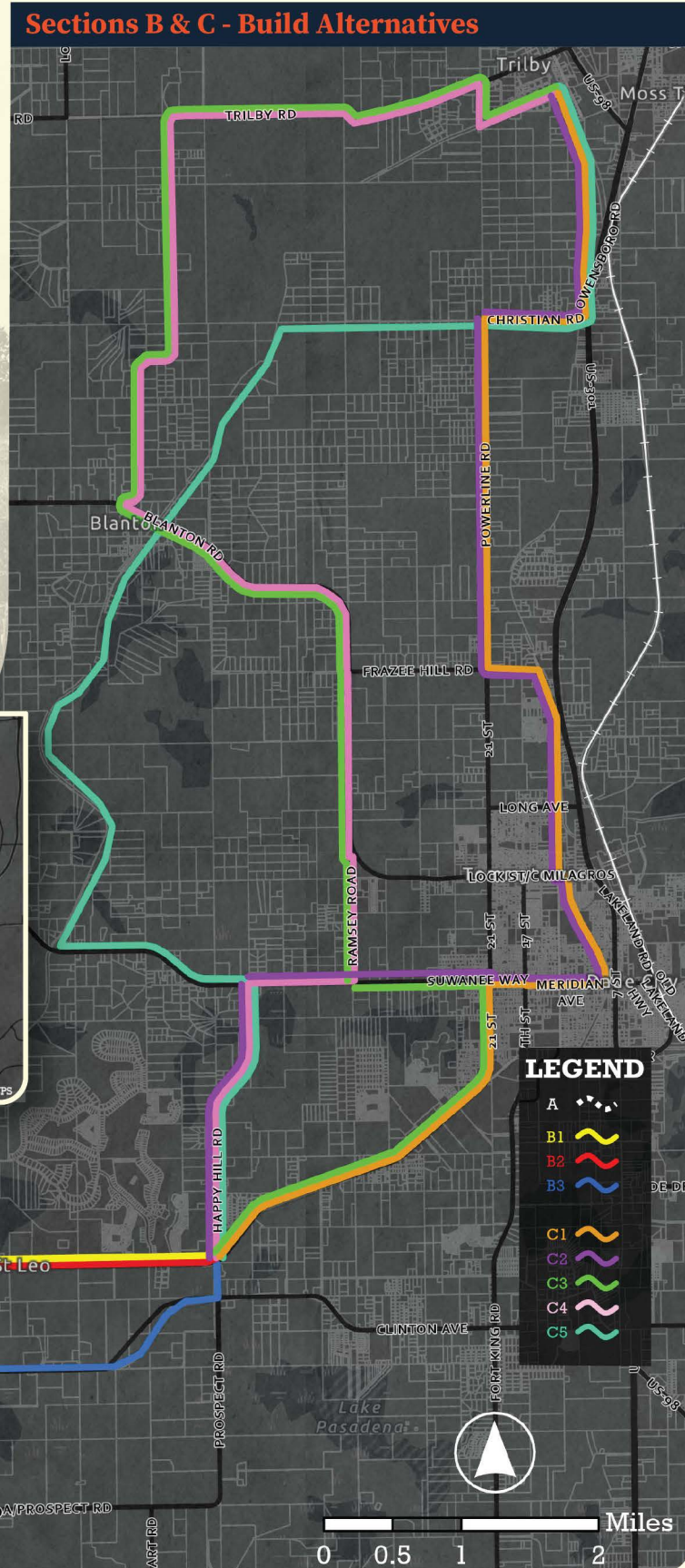
Pasco County is committed to ensuring that residents and potential users of the trail play a major role in its development and design. All are encouraged to share thoughts on our website - <http://orangebelttrail.com>



### Section A - Build Alternative



### Sections B & C - Build Alternatives





# Preliminary Alternatives Evaluation

Group	Initial Evaluation Criteria	B1		B2		B3	
		Ranking	Score	Ranking	Score	Ranking	Score
Cultural	Access to Community & Cultural Centers	High	1	High	1	Medium	2
	Access to Schools	High	1	High	1	Medium	2
	Access to Parks, Trails, and Recreation Facilities	High	1	Medium	2	Medium	2
Physical & Natural	Potential Impacts to Historic Structures	High	3	Medium	2	Low	1
	Nearby Hazardous Waste Facilities	Low	1	Low	1	Medium	2
	Potential Impacts to Habitat	Low	1	Low	1	Low	1
	Potential Impacts to Wetlands	Low	1	Medium	2	Medium	2
Socioeconomic	Population Density	Medium	2	Medium	2	Low	3
	Access to Underserved Communities	Medium	2	Medium	2	Low	3
Qualitative	Economic Development Opportunities	Medium	2	Medium	2	Medium	2
	Equestrian Suitability (Access to Trails / Open Spaces)	Medium	2	Low	3	Low	3
	Safety / High Visibility	Medium	2	Medium	2	High	1
	Traffic Stress (Conflicts with Street Traffic / Crossings)	Medium	2	Medium	2	High	3
	User Comfort	High	1	Medium	2	Low	3
	Infrastructure Improvement / Network Enhancement	High	1	Medium	2	Low	3
Cost	Potential Construction & ROW Costs	Medium	3	Medium	3	Low	1
Engagement	Community & Stakeholder Input						
		26		30		34	

Group	Initial Evaluation Criteria	C1		C2		C3		C4		C5	
		Ranking	Score	Ranking	Score	Ranking	Score	Ranking	Score	Ranking	Score
Cultural	Access to Community & Cultural Centers	High	1	Medium	2	Medium	2	Medium	2	Low	3
	Access to Schools	High	1	Medium	2	High	1	Medium	2	Low	3
	Access to Parks, Trails, and Recreation Facilities	High	1	High	1	Medium	2	Medium	2	Medium	2
Physical & Natural	Potential Impacts to Historic Structures	Medium	2	Low	1	Medium	2	Low	1	Low	1
	Nearby Hazardous Waste Facilities	High	3	Low	1	Medium	2	Low	1	Low	1
	Potential Impacts to Habitat	Low	1	Medium	2	High	3	High	3	Medium	2
	Potential Impacts to Wetlands	Low	1	Medium	2	Low	1	Medium	2	Medium	2
Socioeconomic	Population Density	High	1	Medium	2	Medium	2	Low	3	Low	3
	Access to Underserved Communities	High	1	High	1	Medium	2	Low	3	Low	2
Qualitative	Economic Development Opportunities	High	1	Medium	2	Medium	2	Medium	2	Low	3
	Equestrian Suitability (Access to Trails / Open Spaces)	Low	3	Low	3	High	1	High	1	High	1
	Safety / High Visibility	High	1	Medium	2	Medium	2	Medium	2	Low	3
	Traffic Stress (Conflicts with Street Traffic / Crossings)	High	3	High	3	Medium	2	Low	1	Low	1
	User Comfort	Low	3	Medium	2	Medium	2	Medium	2	High	1
	Infrastructure Improvement / Network Enhancement	Medium	2	Medium	2	High	1	High	1	High	1
Cost	Potential Construction & ROW Costs	Medium	3	Medium	3	High	5	High	5	High	5
Engagement	Community & Stakeholder Input										
		28		31		32		33		34	

## Contact:

**Erin Swanson**

Pasco County Project Manager  
[eswanson@mypasco.net](mailto:eswanson@mypasco.net)  
 727-777-5808

**Wiatt Bowers, AICP**

Consultant Project Manager  
[wiatt.bowers@atkinsglobal.com](mailto:wiatt.bowers@atkinsglobal.com)  
 813-785-5012

